



AUSTRALIAN
LEADING
INSTITUTE OF
TECHNOLOGY

Australian Leading Institute of Technology (ALIT)

RTO Code: 45156 CRICOS Code: 03981M

Student Handbook



Contents.

General Information about ALIT

Introduction	05
About ALIT	05
Mission Statement	05
Vision	05
Our Objectives	06
Information available before enrolment	06
Getting started at ALIT	06
Student Code of Behaviour	07
ALIT provides Student-centric training	08
Education and Training Delivery by ALIT	08
Educational Standards	09

General Information – Student Support, Facilities, Resources and Equipment provided to students

Student Support Services	10
How student needs are proactively identified	10
How student needs are systematically monitored and responded to	10
Support for positive learning outcomes	11
Staff available to students with learning needs	11
How assistance is available to students	11
Student Welfare Services	12
Students at risk	13
Additional resources available to students	13
ESOS Framework	13
External Support Services	14

Living in Melbourne

General help for international students	17
Climate	17
Accommodation	17

Contents.

General Information – Courses we deliver

Courses we deliver	29
Training support after training sessions	29
Individual learning and reflection	29
Guided learning	29

General Information – 35

ALIT Policies, Procedures, Legislative and Regulatory requirements and obligations available on website

Quality Assurance and Improvement - Education and Training operations ..	31
Education and Training Guarantee	31
Legislative Requirements	31
Tuition Assurance	32
Allowed attempts to demonstrate competency/ Reassessment	33

General Information – Student Rights, Obligations and Responsibilities

Plagiarism	36
Consequences of Plagiarism	36
Student Code of Conduct	36
Unacceptable and Inappropriate behaviours	37
Certificates and Statements of Attainment	40
Qualification Completion Timeframe	40



Registered Training Organisation (RTO) Details:
Australian Leading Institute of Technology (ALIT)
Main Campus - Spencer Street West Melbourne
Address: 500 Spencer Street West Melbourne VIC 3003

Contact No: 61 3 9917 5018

Email: admin@alit.edu.au

Website: www.alit.edu.au

Dear Students,

On behalf of Australian Leading Institute of Technology , I am delighted to extend a warm welcome to each and every one of you as we embark on a new academic year. As the CEO of this esteemed institution, I am thrilled to have the opportunity to guide and support you on your educational journey.

At ALIT, we believe in fostering an environment that nurtures not only academic excellence but also personal growth and development. Our dedicated faculty and staff are committed to providing you with the knowledge, skills, and experiences that will empower you to thrive in today's dynamic world.



As you step foot on our campus, you will find a vibrant community of learners from diverse backgrounds, cultures, and perspectives. This diversity enriches our learning environment and encourages collaboration, critical thinking, and creativity. Together, we will create a space where all voices are heard and respected, fostering an inclusive and supportive community.

I urge you to make the most of your time here. Engage in meaningful conversations, participate in extracurricular activities, and seize every opportunity to expand your horizons. Our college offers a wide range of resources, including state-of-the-art facilities, internships, and career services, all designed to help you shape your future and achieve your goals.

Our vision is to enable our learners to achieve their chosen career goals by providing excellence in training and supporting you in your path to career satisfaction. This Learner Handbook will provide you with information and procedures about Australian Leading Institute of Technology ,as well as the services we provide and how to enrol. If at any time you require additional information, please do not hesitate to contact us on <https://info@alit.edu.au>

As your CEO, I am here to support you throughout this journey. Whether you have questions, suggestions, or need guidance, my door is always open. Feel free to reach out to me or any member of our dedicated team. Once again, welcome to ALIT. Together, let's make this academic year one filled with knowledge, growth, and unforgettable memories.

Best wishes for a successful and fulfilling year ahead!

Sincerely,

Emily McLennan
Chief Executive Officer

General Information about ALIT

Introduction

The Australian Leading Institute of Technology (ALIT) upholds its compliance to the standards across a range of statutory bodies, including the Standards for Registered Training Organisations (RTOs) 2015 from the VET Quality Framework as well as other VET regulations and Commonwealth, State and Territory legislation. ASQA uses the Standards to ensure nationally consistent, high-quality training and assessment

About ALIT

ALIT is a Registered Training organisation (RTO) and Commonwealth Register of Institutions and Courses for Overseas Students (CRICOS) provider, delivering national recognised vocational training. To ensure our compliance with the framework and standards above, we implement rigorous internal policies, procedures and systems that ensure that our operations are compliant. In addition, we participate in audits with ASQA and other national and state regulatory bodies upon their request.

ALIT has modern, up-to-date facilities, and boasts a team of qualified and dedicated Trainers and Assessors. ALIT is responsible for the quality of the nationally recognised training and assessment we deliver. This means that we will always comply with the regulations that govern ALITs, being the VET Quality Framework, including the Standards for RTOs 2015, and ESOS/National Code requirements.

ALIT maintains a learning environment that is conducive to the learning and professional development of students. The institute has the capacity to deliver the Education and Training programs on its scope of registration and will ensure that the facilities, methods and materials used in the provision of training will be appropriate to the needs of the student and outcomes to be achieved.

If at any time you feel we have not met our obligations as an RTO, you have the right to make a complaint following our Complaints and Appeals Policy outlined further on in this Handbook. This handbook is designed to give you some relevant information about your studies and answer any queries you may have in relation to your training.

Please take some time to read this handbook and if you require any further information, check out our website or give us a call.

We look forward to celebrating your achievements with us. Good luck!

Mission Statement

ALIT aim to provide job-ready graduates who are appropriately trained to the level expected by the industry and enable our learners to become a well-rounded, confident and responsible individual who aspires to achieve their chosen career goals by providing excellence in training and supporting career pathways to achieve student full potential.

Vision

Our aim is to be:

- Known for high quality outcomes
- Known for growth strategies

Our vision is to continuously improve to become a market leader and centre of excellence in delivering training to our learners in ways that will build knowledge and skills that translate to ability in the workplace.

Our Objectives

In Recognition of our Mission, our Objectives are:

Industry Engagement: We recognise the value of industry engagement as the driving force in shaping our training and assessment strategies. We deliver training and assessment services which are founded on industry needs and expectations;

People: We strive to attract, recruit and retain talented, competent and committed trainers and assessors. We promote excellent performance through leadership and ongoing targeted professional development;

Safety and Equality: We are committed to providing an environment which is safe, equitable, and promotes a confident and productive training and assessment environment;

Integrity and Ethics: We conduct ourselves in accordance with shared and agreed standards of behaviour, and hold ethical conduct and integrity as our highest priorities;

Quality Committed: We aspire to deliver consistent, high-quality services, and apply quality systems that support training and assessment superiority; and

Student Focused: We thrive on providing training and assessment that is student focused and which supports lifelong learning. We respect our students and strive to attract them time after time through high quality training and assessment experiences.

Information Available Before Enrolment

The following information is available to all prospective students prior to enrolment via our website and marketing materials to ensure that the student can make a sound decision based on all the relevant aspects of the training they wish to undertake:

- Information about, amongst other things, all fees and charges;
- Applicable qualifications/courses by the appropriate code and title;
- Outline the currency of the qualifications/courses in question;
- Outline the duration of training and the assessment requirements;
- Specify modes of delivery and delivery locations;
- Specify entry requirements into the course;
- Provide information specific to student contributions and responsibilities;
- Student support, facilities and resource; and

Getting Started at ALIT

Once we process your enrolment, you will be provided with an outline of your training (known as a Timetable) which will include:

- The units/competencies to be obtained;
- The time-frame for achieving these units/competencies;
- The training to be undertaken;
- Information about your trainer and assessors; and
- The name of the qualification to be issued.

Unit dates may change over time – your trainer will keep you and your timetable updated.

You will also undertake a Language, literacy and numeracy (LLN) assessment relevant to your course. This is to identify whether you need additional support to successfully complete your course. More details are provided later in this handbook

Our Objectives

In Recognition of our Mission, our Objectives are:

Industry Engagement: We recognise the value of industry engagement as the driving force in shaping our training and assessment strategies. We deliver training and assessment services which are founded on industry needs and expectations;

People: We strive to attract, recruit and retain talented, competent and committed trainers and assessors. We promote excellent performance through leadership and ongoing targeted professional development;

Safety and Equality: We are committed to providing an environment which is safe, equitable, and promotes a confident and productive training and assessment environment;

Integrity and Ethics: We conduct ourselves in accordance with shared and agreed standards of behaviour, and hold ethical conduct and integrity as our highest priorities;

Quality Committed: We aspire to deliver consistent, high-quality services, and apply quality systems that support training and assessment superiority; and

Student Focused: We thrive on providing training and assessment that is student focused and which supports lifelong learning. We respect our students and strive to attract them time after time through high quality training and assessment experiences.

Information Available Before Enrolment

The following information is available to all prospective students prior to enrolment via our website and marketing materials to ensure that the student can make a sound decision based on all the relevant aspects of the training they wish to undertake:

- Information about, amongst other things, all fees and charges;
- Applicable qualifications/courses by the appropriate code and title;
- Outline the currency of the qualifications/courses in question;
- Outline the duration of training and the assessment requirements;
- Specify modes of delivery and delivery locations;
- Specify entry requirements into the course;
- Provide information specific to student contributions and responsibilities;
- Student support, facilities and resource; and

Getting Started at ALIT

Once we process your enrolment, you will be provided with an outline of your training (known as a Timetable) which will include:

- The units/competencies to be obtained;
- The time-frame for achieving these units/competencies;
- The training to be undertaken;
- Information about your trainer and assessors; and
- The name of the qualification to be issued.

Unit dates may change over time – your trainer will keep you and your timetable updated.

You will also undertake a Language, literacy and numeracy (LLN) assessment relevant to your course. This is to identify whether you need additional support to successfully complete your course. More details are provided later in this handbook

Student Code of Behaviour

ALIT are committed to providing safe, supportive and responsive learning environments for everyone. We teach and model the behaviours we value in our students. The code of behaviour is designed to give every student a clear view of what they can expect from ALIT and other students so that all members of our community can benefit from a collaborative supportive environment. In this environment students can then benefit from the training and teaching and support that is provided.

There are consequences for non-compliance with the Student Code of Behaviour including immediate suspension in the case of severe breaches and/or behaviour that may be constructed as threatening to the safety of the student, other students or any person on the Institute's premises. The Institute has a Complaints and Appeals procedure to provide students with a fair and equitable process for resolving any disputes or complaints they may have.

Respect

- Treat one another with dignity
- Speak and behave courteously
- Cooperate with others
- Develop positive and respectful relationships and think about the effect on relationships before acting
- Value the interests, ability and culture of others
- Dress appropriately
- Take care with property

Engagement

- Attend school every day (unless legally excused)
- Arrive at school and class on time
- Be prepared for every lesson
- Actively participate in learning
- Aspire and strive to achieve the highest standards of learning

Safety

- Model and follow Institute codes of behaviour and conduct
- Negotiate and resolve conflict with empathy
- Take personal responsibility for behaviour and actions
Care for self and others
- Avoid dangerous behaviour and encourage others to avoid dangerous behaviour

Respectful Communication

- R – take **Responsibility** for what you say and feel without blaming others –be responsible for their verbal and nonverbal communication with and about others
- E – use **Empathetic** listening - be empathetic towards each other whilst communicating, recognising issues that have arisen and using respectful communication techniques to overcome issues at hand
- S – be **Sensitive** to differences in communication/cultural styles - demonstrate sensitivity to individual communication/cultural styles in a respectful and lawful manner
- P – **Ponder** on what you hear and feel before you speak - take the time to reflect on communication issues arising and take time out to ensure a calm and productive and respectful conversation can proceed to resolve issues at hand
- E – **Examine** your own assumptions and perceptions - recognise that we cannot always be neutral to an issue, thus having the ability to recognise this in ourselves and to evolve others that can provide a more neutral setting to ensure respectful communication with all
- C – keep **Confidentiality** - ensure they maintain confidential private information of other students and ALIT staff
- T – **Tolerate** ambiguity because we are not here to debate. There are no “winners” or “losers.” Students are here to study and improve our position as lifelong learners, and the staff at ALIT are here to facilitate this process in an educational and respectful setting.

ALIT Provides Student-Centric Training

- We create innovative methods of training delivery and skills development that improve people performance, productivity and employment opportunities and are responsive to the needs of our students.
- We consult with industry and incorporate feedback into our training and business operations.
- We offer innovative, responsive and student-centric training that reflects the learning styles and needs of our students and industry.

ALIT Therefore Provides:

- Learning that is professionally and workplace relevant and improves career opportunities;
- Flexible training options, recognising the needs of each individual student;
- Training Consultants/Trainers with recent and relevant industry expertise who are required to maintain currency in their industry experience;
- Innovative and responsive training delivery;
- Expertise to identify and clarify training needs and delivering training that meets those needs;
- Learning programs that make sense in the work environment;
- Students with the required skills for the present and future;
- Where appropriate, practical, hands-on skills linked to underpinning knowledge;
- Learning environments that adapt to change; and
- Learning that leads to career advancement.

Education and Training Delivery by ALIT

ALIT incorporates adult learning principles into the training and assessment strategies of all its training programs. ALIT will, prior to the training program commencement, give participants all relevant information about the program of study, availability of learning resources and appropriate support services.

ALIT will ensure that training and assessment occurs in accordance with the requirements of the training program and the endorsed Training Package and where appropriate, the Training Package guidelines for customising. ALIT customises its education and training programs to meet the needs of the individual. Participants are encouraged to take responsibility for their own learning and to actively participate in the learning and assessment process.



Educational Standards

ALIT strictly follows policies and management practices that maintain high professional standards in the delivery of education and training services, and which safeguard the interests and welfare of its students and, where relevant, their employers.

ALIT maintains a learning environment that is conducive to the learning and professional development of students. ALIT has the capacity to deliver the Education and Training programs on its scope of registration and will ensure that the facilities, methods and materials used in the provision of training will be appropriate to the needs of the student and outcomes to be achieved. ALIT maintains compliant systems for recording and archiving student enrolments, attendance, completion, assessment outcomes, and recognition of prior learning, complaints, qualifications and statements of attainment issued.

ALIT will treat all personal records of students confidentially and will comply with national privacy standards.

Your Trainers and Assessors

ALIT will ensure that the responsibility for the management and coordination of training delivery and assessment (including the recognition of prior learning and recognition of current competencies), staff selection and professional development is clearly identified and undertaken by a person or persons with relevant qualifications and experience.

ALIT will ensure that all Trainers and Assessors have:

- The necessary training and assessment competencies as determined by the National Quality Council (Currently, Australian Industry and Skills Committee) or its successors;
- Have the relevant vocational competencies at least to the level being delivered or assessed
- Can demonstrate current industry skills directly relevant to the training program being trained/assessed; and
- Will continue to develop their VET knowledge and skills as well as their industry currency and trainer/assessor competence.

Your Trainer and Assessor can provide you with assistance on any aspect of the course content, resources or assessment activities.



General Information – Student Support, Facilities, Resources and Equipment Provided to Students

Students required to invest 7-10 hours a week of self-directed learning to complete self-study and assessments.

You need to have the following resources to conduct selfstudy and assessments:

- Internet
- Computer/laptop
- MS Office
- All the students will get Wi-Fi access within the campus.

Student Support Services

ALIT will comply with all laws relevant to the operation of the training premises, including workplace health and safety and fire safety regulations.

ALIT will ensure that training facilities, equipment and other resource materials are adequate for the Training Programs being delivered and are maintained in good order and repair. ALIT has clearly documented procedures for managing and monitoring all Education and Training operations and reviewing Student /employer satisfaction.

How Student Needs are Proactively Identified

ALIT will ensure that student needs are proactively identified, prior to enrolment, via:

- ✓ Pre-enrolment test/LLN

How Student Needs are Systematically Monitored and Responded to

If student needs are identified, ALIT will create an individual learning plan that will include:

- Learning goals to be achieved;
- Contingency plans;
- Logistics of the learning relationship, e.g.: duration;
- Frequency of meetings and the length of meetings;
- Locations of meetings;
- The nature of contacts (i.e., what are they for?);
- The structure of the learning relationship, e.g.: the activities that we will do;
- How progress will be monitored;
- The equipment and/or resources that are needed; and
- WHS considerations.

All individual learning plans will be monitored by the Student Support Officer with respective trainers/ assessors and management



Support for Positive Learning Outcomes

ALIT provides support to all students to ensure positive learning outcomes via a range of strategies:

- Students facing personal difficulties that may affect their learning should approach the PEO for personal/career advice and counsellor;
- Assistance may include a deferment of study, help with a Special Consideration application, or referral to further student support service or external counsellor;
- Students who specifically require assistance with study skills can obtain practical advice on assignment writing; course-specific language and learning skills; and assistance with any language, literacy or numeracy problems;
- Students will be given adequate time to work on assessments and projects;
- All assessments/projects will be assessed at the completion of each unit; and
- ALIT can organise information and assistance regarding any disability related matters as per Commonwealth Disability Discrimination Act 1992.

Staff Available to Students with Learning Needs

- Student Support Officer
- Training Manager
- CEO/ PEO
- Trainers and assessors

How Assistance is Available to Students

Assistance is available to all students via numerous modes:

- Telephone ALIT 24/7 Emergency line (03) 9917 5018 to speak with student support officer;
- Discussion with trainer/assessor in class or after the class hours;
- Email a specific query to their trainer/assessor; or
- Telephone ALIT helpdesk at (03) 9917 5018 or email info@alit.edu.au for all other queries.



Student: Trainer Ratio

Student ratio will be depending on the class size and approvals.

LLN Support

Language, Literacy and Numeracy (LLN) support will be identified through pre-training review, LLN test, orientation session and/or trainer/assessor recommendation. The institute will analyse the information collected and prepare a strategy to support the students. The strategy may include provide one on one support after the class hours, provide extra reading or tasks to complete related to the areas identified.



Student Welfare Services

ALIT offer you a range of welfare services to help with the mental, physical, social and spiritual well-being of students. These services may include, through direct provision or referral, information/advice about: accommodation, counselling, crisis services, disabilities and equity issues, financial matters, legal issues, medical issues, mental health, peer mentoring, programs promoting social interaction, religious and spiritual matters, and stress-management. It may also include advice on academic and study issues.

Internal welfare services will be provided at no additional cost to the student. However, where a student is referred to an external provider, the student will be responsible for meeting the costs of the provider. The Institute does not charge for such referrals to the provider. You can telephone the Office to make an appointment and ask to speak with the Student Support Officer OR email to info@alit.edu.au.



Students at Risk

- ALIT has intervention strategies, including student support services available to enable students to complete qualifications in expected time frames.
- Students at risk of not completing within this time frame are identified as early as possible.
- Students failing to progress in line with the ALIT 's course progression policy and procedure and/or any provisions implemented for any unit of competency assessment are automatically regarded as being "students at risk" and supported via an appropriate intervention strategy.

Course Progress Requirements for Students

Meeting Course Progress Requirements

- ▶ Students must have demonstrated satisfactory course progress requirements by the end of each study period. In order to do so they must have successfully completed (achieved satisfactory outcome on) all assessment tasks marked so far and handed in all assessment tasks due.

At risk of not meeting course progress requirements

Students will be deemed at risk of not meeting course progression requirements if they:

- ▶ Do not attend scheduled training sessions and haven't made arrangements to catch up or defer their studies
- ▶ Do not participate in learning tasks.
- ▶ Do not participate in a summative assessment task.
- ▶ Do not submit an assessment task when due date
- ▶ Have received an assessment outcome of Not Satisfactory on a second attempt for any assessment task.

Monitoring and Study Periods

At the end of each study period students will be assessed as having met or not met the course progress requirements. At the end of each monitoring period students will be assessed for being at risk of not meeting course progress requirements, and an individual intervention plan will be implemented so that ALIT can support those who are 'at risk'

Additional Resources Available to Students

- <https://training.gov.au/> Government Website Updates
- Meeting Individual Student Needs Reference
- Learning and Assessment Resources
- Updates from the Industry skills councils/SSOs
- Updates from the VELG news
- Please refer to self-study guides (unit level) for more information

ESOS Framework

Australia's laws promote quality education and consumer protection for international students. These laws are known as the ESOS Framework and they include the Education Services for Overseas Students Act 2000 and the National Code 2018. You can find more information on the ESOS Framework here -

<https://internationaleducation.gov.au/Regulatoryinformation/Pages/Regulatoryinformation.aspx>

External Support Services

For students requiring additional support with their studies, work or life, ALIT provides the following referrals to community organisations that may be able to assist you. Please note that some of these services may attract a fee which is payable by student:

Reading and Writing Hotline

Telephone: 1300 655 506

Website: <https://www.readingwritinghotline.edu.au/>

For the price of a local call anywhere in Australia, the Hotline can provide you with advice and a referral to one of 1200 providers of courses in adult literacy and numeracy.

Australian Human Rights Commission

Telephone: (03) 9281 7100

Website: <https://www.humanrights.gov.au/>

The Commission can resolve individual complaints about discrimination, sexual harassment and racial and religious vilification by offering a conciliation process that is confidential, impartial, free, and simple. You can also discuss disability rights and direct you to a network of advocates. This support may include making representation on behalf of individuals with a disability, helping individuals to advocate for themselves or helping others to advocate for them.

24-hour Counselling Hotlines Lifeline

Telephone: 13 11 14

Anyone can call Lifeline. The 13 11 14 service offers a counselling service that respects everyone's right to be heard, understood and cared for. They also provide information about other support services that are available in communities around Australia. If you feel that you might need telephone counselling, you can call about anything that might be troubling you.

Kids Help Line

Telephone: 1800 55 1800

Website: www.kidshelpline.com.au/

Other Counselling Services

Gay and Lesbian Switchboard Victoria: 03 9663 2939

Road Trauma Support Team (Confidential service for people affected by road trauma): 1300 367 797 SANE Mental Illness Helpline: 1800 187 263 (9am-5pm Monday-Friday):

Mental Illness Fellowship Victoria (helpline): 03 8486 4200

MensLine Australia (for men with family and relationship concerns): 1300 789 978

Men's Referral Service (for men concerned about their anger or violence): 1300 766 491

Interpreting Service: 131 450

Fair Work Australia

Telephone: 1300 799 675

Website: www.fwa.gov.au/index.cfm

Fair Work Australia is the national workplace relations tribunal. It is an independent body with power to carry out a range of functions relating to minimum wages, employment conditions, termination of employment and other workplace matters.

Reach Out

Website: www.reachout.com.au

Reach Out is a web-based service that inspires young people to help themselves through tough times and find ways to boost their own mental health and wellbeing. Their aim is to improve young people's mental health and wellbeing by building skills and providing information, support and referrals in ways they know work for young people.

Legal Aid

Victoria: <https://www.legalaid.vic.gov.au/>

Australian Search and Rescue

Aviation Search & Rescue: 1800 8150257

Coast Guard Search & Rescue: 9598 7003

Maritime Rescue: 1800 627 484

Centre Against Sexual Assault: 1800 806 292

Health Information Services

Eating Disorders Foundation of

Victoria: 1300 550 236

women's domestic violence crisis service

Victoria: 1800 732 732

Poisons Information Centre: 131 126

Maternal & Children Health Line (24hrs): 132 229

Nurse-On-Call (24-hour health advice and information from a registered nurse): 1300 606 024

Family Drug Help: 1300 660 068

Medical Centres Around ALIT Institute

The Town Medical Centre: 5/179 Queen Street, Melbourne, VIC 3000. Tel: (03) 9670 5777

VITA Medical Centre: 375 Kings Street, West Melbourne, VIC

3003. Tel: (03) 9193 6221

National Home Doctor-DOCTOR TO YOUR DOOR

Tel: 03 9429 5677



LIVING IN MELBOURNE

Melbourne is the capital of the State of Victoria and Australia's second largest city. It is famous for its parks and gardens, historic buildings, theatres, galleries, restaurants, multicultural precincts, festivals and internationally recognized sporting events. Melbourne is a well-planned city and very easy to get around. There is always plenty to do in Melbourne: please check



General Help for International Students

If you have a problem, the first place you should go for help is the reception at unit 16 d/77-79 Ashley St Braybrook Vic 3019 medical centre. ALIT staff will be able to assist you or refer you to a person who can help you. If you have money problems, personal problems, problems with school or anything else, the staff will be able to assist you with advice and put you in touch with the right people.

Climate

Melbourne has four distinct seasons. Summer is dry with warm to hot daytime temperatures averaging 28 degrees C (82 degrees F). Winter is cold, crisp and wet with daytime temperatures averaging 14 degrees C (57 degrees F). Weather can affect you and your family while settling into Melbourne or Australia. Some may be used to a much warmer climate. Some may be used to colder weather. Getting to know what the weather is like in Melbourne can help you prepare and feel more settled.



Melbourne's weather is highly unpredictable and is known to occasionally provide 'four seasons in one day'. A range of clothing for all conditions is recommended for anyone planning to study in or visit Melbourne. A really warm coat is essential for the winter months.

Accommodation

The first decision to consider is deciding what type of place you want to live in and where you want to live. You can rent your own apartment, flat or house; you can share a flat or house with other people (an arrangement called "shared accommodation"). When you make a decision about where to live, you need to balance the cost of higher rents in the city areas with the lower rents and higher transport costs of living in the suburbs. There are some vacancies that you can check on the Domain website: <http://www.domain.com.au/>. Please click on "property", then click on either "rent" or "share" for more information. Another useful site for renting a place of your own is to visit the Victoria Real Estate Agent website on <http://www.realestateview.com.au>. ALIT will assist the international students for the accommodation, support and general welfare arrangements.



Renting your Own Apartment, Flat or House

Renting your own apartment, flat or house means you can choose who lives with you and may be a good choice for students who prefer their independence. It also means that you may need to buy (or rent) all your own furniture. The estate agent will ask you to sign a contract (tenancy agreement or lease) with the owner, agreeing that you will stay in the place for a minimum period of time (usually 6 or 12 months). Make certain that the accommodation is suitable for your needs and that you can afford it. Always check that there are smoke alarms installed. Contact real estate agents close to the area in which you want to live to check availability and prices.

The average apartment, house or flat ranges from \$200-\$300 per week (one bedroom) or \$250 - \$400 per week (two bedrooms). You will also pay a bond or security deposit equal to one month's rent. A bond is a security deposit that is held until the end of your tenancy by the landlord or real estate agent in case you don't fulfil your responsibilities. It is refundable after you move out of the flat or house, provided you leave the property in reasonable condition and fulfil your obligations under the lease.

Renting through a real estate agent may appear more expensive but this will offer you the security and civil rights that cannot be guaranteed when renting privately.

Student Apartment Complexes

These are fully furnished and allow students to live independently in a secure and supportive residential environment. As these complexes are very popular there is a high demand when vacancies are advertised. Some places will provide meals for an additional cost. Utility costs are not usually included in the rental price. Rental can vary from AU\$150–AU\$300 per week.

Sharing an Apartment, Flat or House

This type of rental accommodation is usually only arranged after you arrive in Melbourne. In a shared apartment, flat or house each person usually has his or her own bedroom and shares the bathroom, kitchen and living areas with other people. Costs depend on the size of the residence and the number of people sharing. Your budget should allow for food, electricity and other bills, plus transport and other personal costs. Food costs can be shared, with everyone paying an agreed amount per week, or each person buying his or her own food (approximately \$85 to \$130 per week). In most households the cost of electricity, telephone rental and other bills are shared equally (approximately \$70 per week). You will normally record and pay for your own telephone calls. Long distance and international calls are itemised on the telephone bill that is they are listed individually with the number called and the cost of the call. The average price of a room ranges from \$140 to \$220 per week. You will also be asked to pay a bond or security deposit.

Hostel Accommodation

Hostels usually have bathroom, living and leisure areas that are shared with other residents. Some hostels include meals in their fees, while at others kitchen facilities are provided and you cook for yourself. You can have your own room at most hostels, but this is more expensive than if you are sharing a room with another student. There may be other charges, such as a bond (security deposit) and appliance charges. There are many private hostels in Melbourne, offering a furnished bedroom, shared bathroom, living and leisure areas. Computer facilities may also be available weekly prices range from AU\$220–AU\$350. Extra costs may include payment of a bond.

Other Accommodation Issues

If you are under 18 years of age it is ALIT's responsibility to ensure that appropriate accommodation and welfare arrangements have been made for you. These are usually in place before you start your studies. If you have any queries about your accommodation or carer/guardian arrangements, please speak to the Student Welfare Officer. However, at present ALIT does not enrol any students under 18 years of age. If you choose to rent or live in share accommodation or organise a shared accommodation house, you should be aware of your legal rights and responsibilities.

You can get most of this information from a booklet called *Renting: Your Rights and Responsibilities*.

<http://www.findlaw.com.au/article/4534.htm>

this booklet will give you information about your rights as a tenant in rental accommodation and your responsibilities, such as household maintenance and paying your rent on time. Another useful information website is www.realestate.com.au click on Rent, then left hand side click on.

Rental Information

If you are under 18 years of age it is ALIT's responsibility to ensure that appropriate accommodation and welfare arrangements have been made for you. These are usually in place before you start your studies. If you have any queries about your accommodation or carer/guardian arrangements, please speak to the Student Welfare Officer. However, at present ALIT does not enrol any students under 18 years of age. If you choose to rent or live in share accommodation or organise a shared accommodation house, you should be aware of your legal rights and responsibilities.

Living Costs

When calculating your budget, you must remember to include your:

- Annual tuition fees
- Textbooks, study excursions and study equipment
- Expenses for any dependents that accompany you (e.g. full school fees for any children, child care etc.)
- Overseas Student Health Cover (OSHC)
- Accommodation costs
- Living expenses including food, gas, electricity, telephone and transport
- Entertainment
- Airfares
- Emergency expenses



Typical living costs for an individual student

These figures are strictly estimate only, based on average situations for an individual student

Sample of Expenses	Apartment/Flat/House (Unfurnished, 2 people sharing)		Home Stay (Some meals included)		Hostel (Some meals included)	
	Per week	Per year	Per week	Per year	Per week	Per year
Establishment Costs (A\$):						
Placement/ arrangement fee				\$ 160*		
Accommodation establishment costs (rental bond, furniture, etc.)		\$ 1,802*				\$ 825*
Recurrent Costs (A\$):						
Rent for accommodation	\$155	\$ 8,060	\$ 230	\$ 11,960	\$ 230	\$ 11,960
Overseas Student Health Cover (OSHC)		\$ 645		\$ 645		\$ 645
Telephone, gas, electricity, water	\$ 60	\$ 3,120	\$ 30	\$ 1,560	\$ 30	\$ 1,560
Travel (up to 10km from city)	\$ 30	\$ 1,560	\$ 30	\$ 1,560	\$ 30	\$ 1,560
Books and stationery		\$ 0		\$ 0		\$ 0
Food	\$100	\$ 5,200	\$ 50	\$ 2,600	\$ 50	\$ 2,600
Personal expenses	\$ 80	\$ 4,160	\$ 80	\$ 4,160	\$ 80	\$ 4,160
Total Estimated Costs		A\$24,654		A\$22,752		A\$23,317

Note: The following information has been compiled based on a single student with no dependents. Should a husband/wife and/or child accompany you to Australia you must be realistic about the additional expenses they will incur.

Part-Time work

If you are holding a student visa and thinking of looking for part-time work, helpful websites are:

www.seek.com.au

www.mycareer.com.au

www.careerone.com.au.

Your visa allows you to work for up to 48 hours fortnightly during study periods and full-time during semester breaks. You should not rely on income earned in Australia during your studies as sometimes jobs may be difficult to find.

From 1 July 2023, work restrictions for all other student visa holders will be re-introduced and capped at the rate of 48 hours per fortnight. This ensures that student visa

holders are able to focus on obtaining a quality Australian education and qualification, while remaining able to support themselves financially, gain valuable work experience, and contribute to Australia's workforce needs.

For more information see media release [Addressing skills shortages in key industries and rebuilding the international education sector](#). There are a range of external agencies you can ask for assistance with employment related issues. Here is a listing of agencies where you can get help:

1) Work Cover Authority & Occupational Health

The Victorian Work Cover Authority is the manager of Victoria's workplace safety system and provides information on Work cover and workplace occupational health & safety issues. For more information, please visit the website: <http://www.workcover.vic.gov.au/> or contact Victoria Work Cover Authority: Level 24, 222 Exhibition Street, Melbourne. 1800 136 089 or (03) 9641 1444

2) Equal Opportunity Commission

Receives complaints from people who feel they have been treated unfairly, have been discriminated against or are experiencing sexual harassment. For more information, please visit: <http://www.eoc.vic.gov.au/> or contact:

Enquiries line:

Phone: 9281 7111 Toll Free: 1800 134 142 TTY (Telephone Typewriter): 9281 7110 Commission Offices

3 Australian Taxation Office

Provides information on taxation and superannuation issues. For more details, please visit: <http://www.ato.gov.au/> or contact these Victorian Taxation Offices: Phone 13 2861 for an appointment

3 Australian Taxation Office

Provides information on rates of pay and conditions of employment, award information, and employee entitlements regarding annual leave, sick leave, redundancy pay, superannuation and related issues. For more information, please visit <http://www.wagenet.gov.au/default.asp> or contact Office of Workplace services – Department of Employment, Workplace Relations and Small Business.

Melbourne Branch 8th Floor Customs House, 414 La Trobe Street, Melbourne, 3000 Phone: 1300 363 264

5) Job Watch

Investigates exploitation in employment and training. It also handles complaints and inquiries from the general public regarding annual leave, notice pay, sick leave, redundancy pay and related issues. For further detail information, please visit:

<http://www.job-watch.org.au/> or contact Job Watch: Telephone Advice: (03) 9662 1933 Email: jobwatch@jobwatch.org.au

6) Legal Aid Commission

Offers free telephone advice service and can assist with applications for legal assistance. Please visit <http://www.legalaid.vic.gov.au> for more information or contact any of the following Victoria Legal Aid Offices: Melbourne Branch 350 Queen Street, Melbourne 3000 Phone: 9269 0234

7) Australian Industrial Relations Commission

AIRC functions broadly, to facilitate agreement making between employers and employees or Organisations of employees about wages and conditions of employment and to ensure that a safety net of fair minimum wages and conditions is established and maintained. For more information, please visit: <http://www.airc.gov.au/> or contact the Commission and registry: Level 4, 11 Exhibition St, Melbourne

Phone: 8661 7777 Fax: 9654 6812

Opening a bank account

In Australia there are two types of Banking organizations; banks and credit unions. Credit unions are co-operative banks. Each person who has an account with a credit union also has shares in the credit union.

When you open a bank or credit union account in Australia you need to provide identification. You will need to bring your passport and some other forms of identification (for example your student identification card, birth certificate or driver's license or identity card from your home country).

If you apply for a bank account within six weeks of arriving in the country, you need only supply your passport. There are two basic types of accounts: -An everyday account which provides you with a cash card for use with 24-hour automatic cash dispensers (ATM Machines) and "EFTPOS" (Electronic Funds Transfer at Point Of Sale) facilities at stores. Some everyday accounts also have cheque book facilities. Accounts with cheque books are subject to a special government tax.

-Investment accounts -these are designed for people who have a large amount of money to deposit in the bank. Investment accounts pay interest at higher rates than everyday accounts and do not usually have cash card access. Investment accounts are a good place to put your tuition fees. It is best to shop around for a bank that suits you. Find a bank that has offices near your home and ALIT for convenience. Almost all banks charge fees on their accounts. You should make sure you know what the fees are and when they will be charged. Banks operating in Victoria include:

- Bank of Melbourne
- Westpac
- Bendigo Bank
- CitiBank
- Colonial State Bank
- The Commonwealth Bank
- National Australia Bank
- St George Bank
- Westpac

When you open your bank account the bank will ask you for your Tax File Number. Australian banks such as ANZ, Bank of Melbourne, Commonwealth, National Australia Bank and Westpac Bank and others have services located in both the city and suburban centres.



Applying for a tax file number

Tax file numbers are used by the Australian Tax Office to identify people when they pay tax. You do not have to have a Tax File Number if you do not want one. However, if you do not give your bank or employer your Tax File Number, any income you earn (including interest on your bank account) will be taxed at a higher rate than if you had given your Tax File Number to your bank or employer.

You can apply for a Tax File Number by going to the local post office and asking for an application form.

Follow the instructions on the form and you will be issued with a Tax File Number. Remember to keep your Tax File Number in a safe place and do not disclose it to anyone other than your employer or bank.

In Australia you will be required to submit a taxation return showing the amount you have earned each year. Tax file numbers (TFNs) are issued to each taxpayer and this must show on your taxation return. To find out more about the Australian taxation system, employment, payment and tax file numbers see the section for individuals, including families, on the Australian Taxation Office website.

Entertainment

Many international events are held in Melbourne and Victoria including comedy festivals, Antipodes (Greek) Festival, Indian Festivals, Chinese Festivals the Australian Tennis Open, World Series Cricket, Melbourne Fashion Festival, and the Formula 1 Grand Prix. There are many more such events. Use www.thats-melbourne.com.au and follow the links to find out what events including sports are on in Melbourne. You can purchase tickets to events through Ticket Master www.ticketmaster.com.au

Port Phillip Bay

Melbourne is also close to Port Phillip Bay – take the No 15 tram to St Kilda – so it is easy to enjoy the beach and water sports too. Be careful while at the beach. Some Victorian beaches can be quite dangerous for inexperienced swimmers. Always swim between the flags at beaches that are patrolled by Lifesavers. For helpful hints on water safeties visit the www.watersafety.vic.gov.au/

Sport and Recreation

There are many places to play and watch all sorts of sport in Melbourne and Melbourne hosts many local, national and international sporting competitions.

The Melbourne Sport and Aquatic Centre in Albert Park is only a short tram ride away from ALIT and for a reasonable fee, you can play basketball, volleyball, table tennis, badminton and swim in the pool. www.msac.com.au/

Out of Town

There are many tourist attractions a few hours' drive from the city – The Yarra Valley, Mt Buller snow fields, Torquay surf beach, Healesville Sanctuary, The Grampians. See www.visitvictoria.com/ Day tour buses are easily accessed on Swanston Street between Little Bourke and Bourke Street and ALIT is close to major transportation hubs.



In the City, Some Places to Visit:

Bourke St Mall: the heart of Melbourne's shopping area with large department stores, Myer, David Jones and many shopping arcades. **DFO:** at Southern Cross Station and Docklands for a range of designer factory outlets and seconds shops.

QV: a new shopping complex in central Melbourne (Elizabeth St, Latrobe St, Russell St block) super market, food court, restaurants and many top-quality shops and designer outlets. **GPO** – the old post office building has been redeveloped, to include shopping, cafes and night clubs – corner of Bourke and Elizabeth Streets Bridge Rd., **Richmond:** also, for a range of designer factory outlets and seconds shops.

Chapel St., South Yarra: a marvellous shopping strip with shops selling all the fashion labels, good food, book-shops etc. **Brunswick Street, Fitzroy** an eclectic mix of shopping and eating opportunities. **Camberwell Markets** Clarendon Street shops in South Melbourne **Coventry Street** shops, also in South Melbourne <http://www.visitvictoria.com/index.cfm/>

Transport

Melbourne has an extensive public transport system and ALIT is ideally located. The campus is close to major bus and tram routes. Before you use any public transport, whether it is a train, tram or bus, you are required to purchase a Myki (stored value travel card). These can be purchased at all train stations and at some newsagents. Please be aware that on trams, you are only able to use coins to purchase your ticket as the machines do not accept notes. Similarly, often buses are unable to cater to large notes such as \$20 or \$50 notes. It is recommended that you purchase your tickets in advance. There are many types of tickets available including weekly, monthly and 10 ticket packs.

Unfortunately, at this stage international students are not eligible for concessions. On trains it is important to validate your ticket before you board the train. If you are found without a valid ticket, you may be required to pay a transport infringement fine.

As Melbourne is a well-planned city it is easy to travel in by car. Cars travel on the left side of the road. Drivers can use their home country license for three months from the date of entry to Australia. An international license can be used providing the license from the country of origin is also valid.



Food

Markets and supermarkets sell a variety of fresh meat, fruit and vegetables as well as rice, breads, spices and other ingredients. Melbourne's restaurants and cafes offer a wide variety of foods from around the world, including Chinese, Italian, Japanese, Korean, Ethiopian, Brazilian, Malaysian, Greek, Indian, Thai, Vietnamese, Lebanese, French and Indonesian.

Clothing

Australian students dress casually. Australians are generally relaxed when it comes to clothes, but they do tend to dress up at night. If you are planning to buy warm clothing, shopping in Melbourne will provide you with a large range at a very competitive price.



Computers & Laptops

If you intend to bring your laptop or PC to Melbourne, you need to ensure that it is compatible with Australia's power supply (240W, 220W, 50HZ). Your modem will also need to be compatible with Australia's telephone system (Austell certified).

Mobile Phones

If you intend to use your existing handset and service provider in Australia ('international roaming'), you will need to contact your home provider to determine the necessary steps in making this arrangement. Alternatively, you may wish to use your current handset whilst in Australia but connect to a local service provider. There are a variety of mobile phone services operating in Australia which offer short-term (pre-paid) or long-term (contract) plans.

You should be aware, however, that because different countries operate under different cellular systems it is possible that your existing handset may not be compatible locally. In this instance you may be required to purchase a local handset.

Adjusting to Your New Campus & City

1. Plan to arrive early before the Orientation and Enrolment period. This will allow you to explore the campus location and new city or town.
2. Choose a good housing option that suits your budget, needs and lifestyle.
3. Consider physical aspects like location and travel time to your campus and household amenities.
4. Talk to ALIT staff, if you have questions or concerns.



Student Safety

Melbourne is a multicultural and tolerant society and although a relatively safe city it is not immune to crime. However, there are some common-sense steps you can take to ensure a safe and enjoyable stay. ALIT Welfare Officer is available to give advice and address any concerns you may have. Be aware of what is happening around you. Should you feel alarmed or suspicious head to a well-lit area or an area where there are other people. Do not use ATM's alone in isolated areas. Choose to walk in well-lit areas and be especially vigilant at night, where possible stick to main roads and avoid parks and dark laneways. Do not wear headphones when walking alone at night as this will restrict your awareness. At train stations stay in well-lit areas and stand near security cameras. Call 000 for police, fire brigade or ambulance.

Cultural Adjustment

International students and their families may experience a wide range of feelings and moods when studying or living in Australia. Some may feel excited to see and learn new things or meet new people. Some may feel lonely, stressed, frustrated and homesick. These are all very normal feelings. However, it is very important that you seek help if you find that the process of cultural adjustment is adversely affecting you. ALIT staff including the Welfare Officer are available to assist and discuss any concerns.

Culture

Learning more about Australian culture can help you feel more settled.



It is common in Australia to call a person by their first name when meeting and addressing new people. Depending on the situation, you do not need to preface it with Mr., Miss, Dr or Professor (i.e. John instead of Mr. John's Surname);

Being on time is very important in Australia. If you are delayed for your appointment, for example 10- 15 minutes, apologies for being late at the first convenience. However, if you feel that you will be significantly late, 30 minutes or more, it is recommended that you get in touch to apologise and let the other person know as soon as possible. However, punctuality is more relaxed when it comes to social occasions including parties and dinners;

Australians believe in equality and that all people deserve respect regardless of their gender, ethnic and racial background, occupation or economic circumstances. A casual “thank you” to a shop assistant, ticket seller and the like when you are served, is all that is required.

Miscellaneous Social Customs

If an Australian is invited to a meal, he or she may take a small gift, chocolates or a bottle of wine, to the host. As a student you are not expected to do this. If Australians tell you to “bring your own plate”, they mean bring a plate with some food to share; Do not push ahead of others who are waiting in a queue and always wait for people to exit lifts or trains before entering. It is not polite to ask a person who you have recently met about his or her income, marital status or religion, however after you have formed a friendship this may be acceptable as part of the friendship building process.

Australians generally stand about an arm’s length from each other when in conversation. In general people will feel uncomfortable if you invade this “personal space” You are not generally expected to tip for services. If the service has been very good, especially in a restaurant, you may wish to do so;

Goods in retail shops are sold at a fixed price, though it is becoming common to ask if a discount is available on large and expensive items, like electrical goods. A little bargaining is commonly used in the open-air markets. Clearing your throat or blowing your nose noisily in front of others, and not using a handkerchief or a tissue paper are not considered acceptable public behaviour.



Appropriate and Inappropriate Behaviour

Learning more about Australian culture can help you feel more settled.

It is common in Australia to call a person by their first name when meeting and addressing new people. Depending on the situation, you do not need to preface it with Mr., Miss, Dr or Professor (i.e. John instead of Mr. John's Surname);

Being on time is very important in Australia. If you are delayed for your appointment, for example 10- 15 minutes, apologies for being late at the first convenience. However, if you feel that you will be significantly late, 30 minutes or more, it is recommended that you get in touch to apologise and let the other person know as soon as possible. However, punctuality is more relaxed when it comes to social occasions including parties and dinners;

Australians believe in equality and that all people deserve respect regardless of their gender, ethnic and racial background, occupation or economic circumstances. A casual "thank you" to a shop assistant, ticket seller and the like when you are served, is all that is required.



Developing Independent Living Skills

Manage your time effectively. Plan ahead what you have to do and what you want to do in a week or a month. Balance your study and social life. Studying and living overseas generally happens only once in a life time. Learn how to achieve your academic goals and enjoy your experience in Melbourne at the same time.

Do not be afraid to ask questions.

Discuss your concerns within your peer support network. Keep records of your expenses to manage your budget. Think about your future. Work out what you want to achieve (both professionally and personally), and how you are going to achieve this. Consider developing additional skills that you do not have or want to further develop (i.e. joining a cooking class, a time management workshop etc.).

Be familiar with as many support services and facilities as possible. Come and talk to us, you do not need to come with a problem. We are happy to simply listen to your experience or share our experience with you

Support

Student Administration – provides support with settling in to ALIT and Melbourne and provides advice and assistance on meeting people in the community, cross-cultural adjustment, study progress, visa concerns and social activities, personal issues, your rights and responsibilities, accommodation needs, issues related to sexual harassment and equal opportunity, and is generally there to listen when you need to talk to someone.



General Information – Courses we deliver

Courses we deliver

We deliver different types of qualification according to industry and Student requirements.

Please visit www.alit.edu.au for the list of courses, duration, entry requirements, Admission requirements and other information training Sessions:

- A trainer will be available during this time to deliver the training session.
- Morning 9.00 AM to 5.00 PM weekdays learning support will be provided to all Students through support officers.

Training Support After Training Sessions

- A trainer will be available to assist students with training support immediately following the session or students may make individual appointments.
- Training support can also be provided to Individual students via telephone and email after the training sessions or on request from the students.
- Generic Student support such as study skills, employability skills, etc. will be provided during support workshops upon request.
- Students will be provided training support after the training sessions for the course or on their request.



Individual Learning and Reflection

- Students are required to process what they have learnt during their reading and research, contemplate on their future professional career and apply the learning to their own life and work experience.
- All students will be provided self-study guides and list of recommended books and resources to complete their individual learning and reflection.
- Individual student reflection is designed to fulfil two purposes:
 - ▶ Personal growth
 - ▶ Personal application

Individual learning and reflection may or may not include:

- Study undertaken by the student in their own time
- Completing supplementary activities
- Additional resources
- Web links/ references
- Real life case scenarios and decision-making processes
- Additional resources
- Journals, newsletters and magazines

Guided Learning

- The trainer provides learning activities; the student takes responsibility for completing all mandated tasks and activities.
- The trainer is available for consultation and feedback as required.
- All students will be provided with resources for Guided learning activities and tasks.

Guided learning may or may not include:

- Student Handbook activities
- Learning activities
- Research
- Induction specific to the course/ unit requirements and content
- Projects
- Case studies



General Information – ALIT Policies, Procedures, Legislative and Regulatory requirements and obligations available on website

Quality Assurance and Improvement - Education and Training operations

Quality Assurance and Improvement - Education and Training operations

ALIT will comply with all laws relevant to the operation of the training premises, including workplace health and safety and fire safety regulations and ensure that the training premises are of adequate size and have adequate heating, cooling, lighting and ventilation.

ALIT will ensure that training facilities, equipment and other resource materials are adequate for the Training Programs being delivered and are maintained in good order and repair. ALIT has clearly documented procedures for managing and monitoring all Education and Training operations and reviewing Student /employer satisfaction.



Education and Training Guarantee

ALIT guarantees that it will deliver education, training and assessment and support services to each enrolled student in order to complete the course or qualification into which they are enrolled and for which the appropriate fee has been paid. In the unlikely event that unforeseen circumstances prevent ALIT from honouring this commitment, ALIT will take all necessary steps to ensure that training is completed in accordance with its contractual obligations to the enrolled Student.

Should the ALIT cease delivery of any training and assessment, a refund for the unassessed work of the course will be provided to the student or student will be transferred to other training provider.

Legislative Requirements

ALIT will comply with all relevant Commonwealth and State legislation and legislative requirements relevant to its operation and its Scope of Registration and will ensure that staff and clients are informed of any changes that may affect the services delivered.

Key legislation with which ALIT must comply:

▶ National Vocational Education and Training Regulator Act 2011
▶ Equal Opportunity Act 1995 and Racial and Religious Tolerance Act 2001
▶ The Disability Act 2006, Disability Discrimination Act 1992, Racial Discrimination Act 1975 and the Disability Regulations 2007 (the Act)
▶ The Working with Children Act 2005 (the Act)
▶ The Privacy Act 1988 (Cth) and National Privacy Principles
▶ Workplace Health and Safety Act 2011
▶ Work, Health and Safety Regulation 2011
▶ Public Records Act 1973
▶ Commonwealth Safe Work Australia Act 2008

▶ Commonwealth Taxation and Superannuation Legislation
▶ Fairwork Act 2009 and Fairwork Regulations 2009
▶ Children, Youth and Families Act 2005
▶ Community Services Act 1970
▶ Health Records Act 2001
▶ Commonwealth Anti-Money Laundering and Counter-Terrorism Act 2006 and associated legislation
▶ Commonwealth Corporations Act 2001 and associated legislation
▶ Commonwealth Competition and Consumer Act 2010
▶ Competition Policy Reform (Victoria) Act 1995
▶ Fundraising Act 1998
▶ Health Professions Registration Act 2005
▶ Health Services Act 1988
▶ Mental Health Act 1986 and regulations
▶ Guardianship and Administration Act 1986
▶ Gambling Regulation Act 2003
▶ Alcoholics and Drug-dependent Persons Act 1968
▶ Alcoholics and Drug-Dependent Persons Regulations 2002
▶ Drugs, Poisons and Controlled Substances Act 1981 and regulations
▶ Food Act 1984
▶ Liquor Control Reform Act 1998
▶ Do Not Call Register Act 2006
▶ Independent Contractors Act 2006
▶ The Copyright Act 1968
▶ Age Discrimination Act 2004
▶ The Victorian Equal Opportunity Act 2010 and the relevant Acts relating to discrimination in the various States in which ALIT delivers training.
▶ Victorian Qualifications Authority Act 2000
▶ Anti-discrimination Act 1991
▶ Human Rights and Equal Opportunity Commission Act 1986
▶ Disability Discrimination Act 1992
▶ Racial Discrimination Act 1992

▶ Racial Discrimination Act 1975
▶ Freedom of Information Act 1982
▶ Student Identifiers Act 2014
▶ Australian Privacy Principles (APP) – Schedule 1 of the Privacy Amendments (Enhancing Privacy Protection Act 2012)

All staff and Students at ALIT must also meet the following regulatory requirements:

- ASQA (Australian Skills Quality Authority);
- VET Quality Framework (VQF);
- The Australian Qualifications Framework (AQF requirements); and
- Other applicable legislation and regulation as relevant to the courses being delivered.

In addition, staff and Students at ALIT must also meet various particular legislative requirements, mentioned in the training packages and legislation register.

Tuition Assurance

ALIT protects the fees that are paid in advance by international students. For international student fee protection is ensured as follows:

- ALIT pays all pre-paid fees collected by the student in advance into the Tuition Protection Scheme (TPS) provided by the Australian Government;
- Where ALIT requires a prospective or current student, either directly to ALIT or through an Education Agent, to prepay fees in excess of a total of \$1500 (being the threshold prepaid fee amount), ALIT will meet the requirements set out in the Requirements for Fee Protection in Schedule 6 of the Standards for Registered Training Organisations 2015. ALIT will take action to protect the prepaid fees by utilising its Tuition Protection Scheme as its protection measures for these students. The requirements for protection of prepaid fees will apply no matter how the fees are collected; and

- Any fees collected by a third party on behalf of ALIT (including its education agent) will be subject to the same conditions. These requirements will apply to fees prepaid by students, regardless of when ALIT actually receives the payment.

Regardless of the method/s used for protection of student prepaid fees, ALIT will retain evidence of how students have been advised of:

- All payment terms; and
- The circumstances under which refunds may be issued.

All course fees will be held in a separate bank account that can only be drawn down when the student commences. The course fees are held separately from the day-to-day operating expense accounts, so that if a refund is payable before the student commences, the refund can be made in according to the refund policy and procedure and in a timely way without impact on the financial operations of the business or recourse to the tuition protection system.

ALIT does not require international students to pay more than 50% of course fees prior to course commencement. Students and their sponsors can now choose to pay more than 50% of tuition fees up front if they wish to do so. Note,

however, that where a course is less than 24 weeks and is delivered over more than one study period ALIT will require students to pay the full cost of the course prior to course commencement.

ALIT will show evidence that students have exercised their choice in how much of their tuition fees are paid up front if they choose to pay more than 50% of the course fees. This is evidenced by ALIT through the student acceptance on the Enrolment application form and Student Agreement. ALIT will offer a flexible payment plan for the student where the student wishes to choose when to start paying their remaining fees.

Payment plan will be divided in four instalments of the course duration.

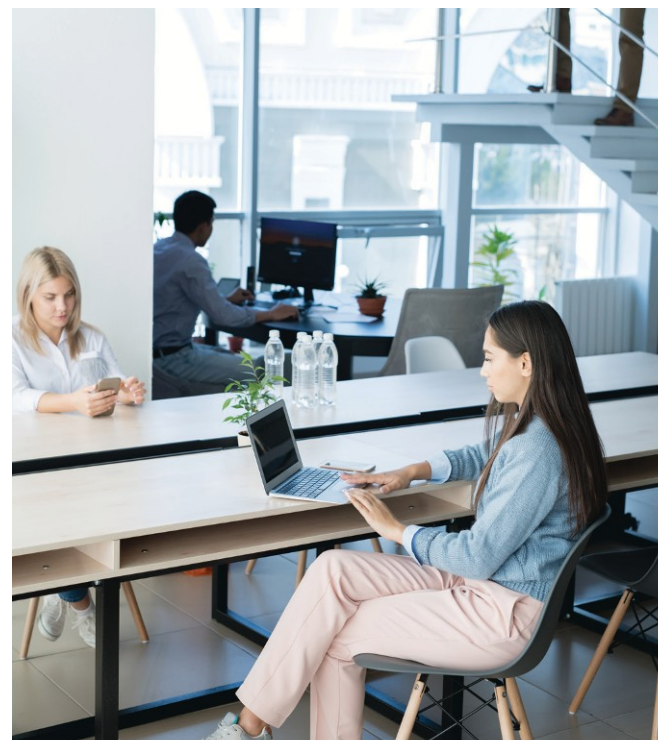
Allowed attempts Reassessment to demonstrate competency/ Reassessment

ALIT allows students two opportunities to be assessed as competent. Should students not achieve competence after two attempts, then they have to repeat the unit of study and \$100 will be charged for re-assessment after two attempts. For details, please refer to Assessment Policy & Procedure on ALIT website.

Evidence may include:

- Work station and fact sheet tests
- Written answers
- Trainers & Assessors observation notes
- Project work
- Workplace mentor evaluations
- Checklists
- Demonstration of skills
- In-house tests

Work Placement





General Information – Student Rights, Obligations and Responsibilities

ALIT Students have the following responsibilities:

- To become familiar with relevant Policies and the Student Handbook and comply with any student requirements contained therein including relevant legislated requirements;
- To respect the working environment of others at the organisation and to follow all related Policies and Procedures;
- To conduct themselves in a responsible, polite and safe manner and refrain from abuse towards ALIT employees or other students;
- To follow all reasonable instructions provided by ALIT Employees;
- To respect the right of ALIT to express the opinions of their Trainer/Assessor;
- To conduct themselves in a courteous, polite and ethical manner and in a manner, which demonstrates tolerance and respect for others and supports the principles of equal opportunity, anti-discrimination and occupational health safety and environment;
- To undertake their studies to the best of their abilities;
- To meet deadlines for work to be submitted;
- To submit authentic documentation (NOTE: where the authenticity of the evidence submitted is in question ALIT reserves the right to conduct further investigation by way of interview and other appropriate means as required);
- To submit work without plagiarising or cheating;
- To consult with ALIT in a timely manner if problems/issues arise;
- To accept joint responsibility for their own learning;
- To provide feedback to ALIT on its courses and services;
- To undertake all study in the manner and formats required and in the specified course timeframes;
- To adhere to ALIT 's code of conduct.
- To seek approval from authorised ALIT Employees for the use of ALIT IT equipment, assets, stationery, et.;
- To encourage equal opportunity;
- To promote an effective learning environment through good personal behaviour;
- To respect the rights of others; and
- To cooperate with ALIT with requests for further evidence including reasonable adjustments made to assessment process, confirmation of authenticity of documentation submitted for assessment and overall confirmation of competency.



Referencing

Assessments must be your own original work. If you use another person's ideas, writing or work and do not acknowledge the original source, you are committing plagiarism. Referencing is a way of showing that you are engaging with the literature in your subject area without plagiarising.

Referencing serves several important purposes:

- Acknowledges sources of information so you are not accused of plagiarism
- Demonstrates the depth and quality of the research you have done
- Allows others to locate sources you have used if they wish to know more

Plagiarism

Plagiarism is taking the words, theories, creations or ideas of another person and passing them off as your own.

Plagiarism can be deliberate – copying a passage from a book or journal or pasting something from the internet into an assignment without referencing the original source. You can also commit inadvertent (accidental) plagiarism which is where you unintentionally repeat some of the information you have read in the course of your research. You must ensure you reference ALL material that comes from another source so question yourself as to whether you have read the information elsewhere and go back to your sources to locate the reference.

Plagiarism can also result from not referencing correctly. You must ensure you know how to reference your work using the style advised by your trainer/assessor.

Consequences of Plagiarism

All forms of plagiarism will be taken seriously - deliberate or not!

Plagiarism is a serious issue that can result in failing an assignment, or even having to leave the course. For more detail, please contact your trainer, student administration or access ALIT's website.

Student Code of Conduct

The Student Code of Conduct outlines the rights and responsibilities of all Students. The Code of Conduct is in place to ensure an atmosphere of respect, understanding, and professionalism for all students. ALIT celebrates diversity and embraces equal opportunity and promotes a supportive adult learning environment.

Student Rights

All students have the right to:

- Feel safe and welcome at ALIT;
- Be treated with respect and dignity;
- Privacy (as per the Privacy Act and Australian Privacy Principles): only information necessary to the core functions of ALIT can be shared without the student's prior consent;
- Be free from bullying and harassment (including sexual harassment) online or during any ALIT training activity;
- Receive fair and equitable training and assessment;
- Receive services without discrimination;
- Complain without fear or recrimination;
- Be provided with, and have access to, ALIT policies, procedures and Student rights.

In general, it is expected that as a student you will:

In general, it is expected that as a student you will:

- Be responsible for your own study program;
- Treat staff and fellow Students respectfully, courteously and with consideration at all times, whilst respecting their privacy and safety;
- Respect ALIT's equipment, resources and facilities;
- Actively participate in the learning process;
- Respect the rights of other Students and staff to have their own opinions;
- Be open to, and welcoming of, the diversity of Students in your course.

Sanctions, such as suspension or expulsion from the Institute, may be applied where Students fail to conduct themselves in an appropriate manner.

For more information, please access ALIT 's website or via email to <https://alit.edu.au>.

Unacceptable and Inappropriate behaviours

ALIT is committed to promoting an atmosphere of respect, understanding, professionalism, equity and access for all Students.

Harassment

Is any form of behaviour that:

- Is not asked for
- Is not wanted
- Is not returned and is likely to create a hostile or uncomfortable place to be
- Is humiliating, intimidating or offending.

Harassment

Is illegal and will not be tolerated by ALIT.

Bullying

Includes:

- Intimidation
- Physical harm, emotional distress
- Threats/name calling/derogatory comments regarding age, gender, race, religion or sexual orientation
- Failure to acknowledge good work
- Deliberate isolation groups/information/opportunities
- Undue pressure and impossible deadlines from
- Emotional hurt to another person through electronic devices such as email, phone, and text message.





General Information – Qualifications

Certificates and Statements of Attainment

Students who successfully complete all the requirements of their training program will receive a Nationally Accredited Certificate or Student who does not complete the full requirements of the training program will be issued a Statement of Attainment according to the requirements specified in;

<https://www.asqa.gov.au/rto/responsibilities/qualifications-and-statements-attainment>

ALIT will issue Certificates and Statements of Attainment that are within its scope of registration, and that certify achievement of:

- Qualifications or industry / enterprise competency standards from nationally Endorsed Training Packages; or
- Qualifications, competency standards or modules specified in accredited courses.

Moreover, that:

- Meet the requirements in the current AQF Implementation Handbook, including the national codes.
- Identify the units of competency from Training Packages, or competencies or modules from accredited courses, that the student has attained.
- Identify the ALIT by its national provider number.

ALIT will issue all AQF certification within 30 calendar days of a student being assessed as competent in the qualification, skill set or unit of competency in which they are enrolled and providing all agreed fees have been paid to ALIT.

Qualification Completion Timeframe

ALIT has provided the following timeframes for course completion:

Qualification Timeframe

Please note:

- a) ALIT reserves the right to cancel an enrolment without notice (withdraw the student), if after allocated timeframe a student has not completed and achieved their Qualification of Individual Unit of Competency.
- b) If the Qualification has partially successfully been completed, a Statement of Attainment will be issued for those units completed the student has been deemed competent.
- c) Your Student File and Student Management System records will be updated to reflect changes with your qualification timeframe and completion.

Exit Point

- Unit by unit delivery allows students to exit at any point with full credit for all successfully completed units.
- At any point before the completion of the program, a participant may request a Statement of Attainment for an individual unit or units where he/she has been assessed competent.
- At the successful completion of the program, a certificate and record of results for the qualification will be issued.

Student declaration

I, the under named, declare that I have received, read, and understood with the contents of this Student handbook, which also outlines the following conditions as a student of ALIT.

Student Name
Student Signatures
Date

Student obligations

- I understand my obligation responsibilities as a student

Student support

- Unit by unit delivery allows students to exit at any point with full credit for all successfully completed units.
- At any point before the completion of the program, a participant may request a Statement of Attainment for an individual unit or units where he/she has been assessed competent.
- At the successful completion of the program, a certificate and record of results for the qualification will be issued.

National recognition

- I understand the options for national recognition and recognition of prior learning
- I have been advised of the nationally recognised qualification to be issued on successful completion of the course.

Fees and Refunds

- I have been advised of all applicable fees and charges
- I have been advised of all refund and reimbursement guidelines

Complaints and appeals

- I have been advised about the Complaints and Appeals processes and procedures

Work Health and Safety

- I have read and understand my rights and responsibilities as a student. This includes my rights and responsibilities regarding Workplace Health and Safety. I agree to abide by the rules of this organisation and to report any WHS issues to ensure a safe learning environment.



Australian Leading Institute of Technology (ALIT)



ALIT EDUCATION GROUP PTY. LTD. As proprietary company trading as
Australian Leading Institute of Technology | ABN: 61 610 991 | RTO No:45156 | CRICOS:03981M
500 Spencer St., West Melbourne VIC 3003 | Telephone: (03) 99175018 | Email: info@alit.edu.au

website: www.alit.edu.au